



University of
Pittsburgh®

2024-2025 Season



PITT STAGES PROUDLY PRESENTS

MORNING RECKONING



114693-0024

FEB. 14-23, 2025

Richard E. Rauh Studio Theatre

For more information and tickets, visit play.pitt.edu.

A NOTE FROM THE DIRECTOR:

"Strangers are exciting, their mystery never ends. But there's nothing like looking at your own history in the faces of your friends."
- Ani DiFranco

Friendships are hard. Eighth grade is hard.

Learning to navigate passions, relationships, parents, and life is hard.

Getting the chance to work with Kelly Trumbull's characters and watch this team bring her story to life was hard. The good kind of hard, that makes you laugh, scream, call your best friend, and ugly cry all at once. I think back to the moment Kelly let me read the one act version of *Morning Reckoning*; I felt the lives of these characters and needed to see them onstage. These were my friends in junior high, this was the 90's of my childhood. This is the script we need to share about how amazing and hard it is to grow up with friends. Being entrusted with a story that embraces the fangirl in every one of us, while deeply exploring how girl friendships live, and breathe, and change has been an incredible journey with this theatre team. There are about seven girls I went to junior high with in Murrysville and, though our lives intersected in different ways over the last 20 years, we started a zoom called the Quarantillions in 2020. I felt safe and connected during that time in my life because of their love and I have been so lucky to have my own club. And to have plenty of forgiveness in their love for all the people I've been over this time. This is for old friends, who will always know you better than anyone.

Thank you for this story Kelly.

Thank you Emma and Howard for making it make sense.

Thank you to everyone whose labor and time brought us to this production today.

Thank you for being here, we hope that you enjoy this time with us and join in cheering, "Who Do We Love?"

Ashley Martin, Director



MORNING RECKONING

Written by Kelly Trumbull
Directed by Ashley Martin

Cast

Kandace..... Lola Hodgins
Trisha..... Spade You
April..... Ava Hartman
Emily..... Maddie Colucci
Sue..... Advika Ravishankar
Nadia..... Emi Prudhoe

Understudies

Kandace/Sue.....Hailey Brownley
Trisha/Emily..... Magdalene Wilson
April/Nadia..... Maeve McNichol



Production & Creative Teams

Director.....	Ashley Martin
Assistant Directors.....	Emma Hannan Howard Patterson
Scenic Designer.....	Kylie Wilson
Costume Designer.....	Claire Stemmer
Lighting Designer.....	Annmarie Duggan
Assistant Lighting Designer.....	Hayley Rizor
Sound Designer.....	Kyle Buchheister
Stage Manager.....	Colin Eccher
Assistant Stage Managers.....	Maggie Megosh Maya Viaropulos
Properties Artisan.....	Natalie Rose Mabry
Choreographer.....	Alex Manalo
Playwright.....	Kelly Trumbull
Dramaturg.....	Payne Banister
Acting Coach.....	Jeremy Kahn
Music Composers.....	Brad Stephenson Addi Twigg

This digital program allows us to reduce paper consumption and divert printing costs to supporting students' education, creative explorations, and excellence. Click each individual's name to learn more about them. Navigate to credit listings using the links at the bottom of each page.

Playwright Biography



Kelly Trumbull (Playwright) is a Teaching Assistant Professor in the Theatre Arts Department at the University of Pittsburgh. She has numerous professional acting and directing credits in Pittsburgh and beyond. She is thrilled that her first full-length play, *Morning Reckoning*, is being produced at Pitt Stages this season. Currently, she serves as an Artist Lecturer in Acting at Carnegie Mellon University's School of Music and is a resident artist with the Pittsburgh Public Theater Playwrights Collective. She is a proud member of AEA, SAG-AFTRA, and The Dramatists Guild. www.kellytrumbull.com

.....

This play was originally presented in one act during the 2022-2023 Community Supported Art (CSA) season at Pittsburgh's New Hazlett Theater.



center for
performing
arts

.....

 [Return to Cast List](#)

Dramaturgy Note

Mor-Ning-Recko-Ning Ka-Boom!!!

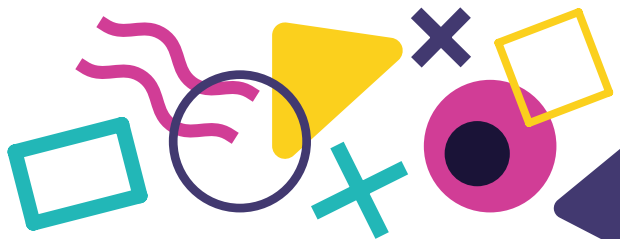
The Morning Reckoning Fan Club's Wayne, New Jersey chapter begins each meeting with this chant. For over two years, this small but mighty group of eighth-grade girls have shared their love (and borderline obsession?) for their favorite 1990s boyband. Pooling their knowledge together, this club knows almost everything about Morning Reckoning—their favorite colors, their favorite foods, their hometowns, and even their romantic interests. For these girls, Morning Reckoning is not just a boyband; it's an integral part of their lives.

As the girls navigate the awkwardness of middle school in 1990s suburbia, the fan club is their source of community. At their gatherings, they share snacks and gossip about boys at school and the latest Morning Reckoning news. These friendships are tested when their favorite band member faces a personal crisis and a new girl is invited to join the fan club. The play's second act moves us twenty years into the future and we see how these relationships, forged at such a formative time in their lives, extend into adulthood. Although the group's dynamics shifted over the years, they remain connected through their love of Morning Reckoning and each other.

At its core, *Morning Reckoning* is a love letter to the 1990s, boybands, fandom, and the magic of childhood friendships. The play lovingly reminds us that although friendships can be messy, there is room for forgiveness and care. When all else fails, dance it out.

Welcome to the club!

Payne Banister
Dramaturg





Cast Biographies

Hailey Brownley (Understudy for Kandace/Sue) is a senior theatre arts and psychology double major with three minors. Her previous Pitt Stages productions include *Emilia* (Lord Henry Carey/Judith) and *Astronots* (Narrator), she is a proud member of Pitt Musical Theatre Club, and is currently Becki Toth's musical theatre TA. Hailey wants to thank Ashley for including her in this incredible project, and giving her the chance to work with such a talented and supportive group.

Maddie Colucci (Emily) is a freshman intending to major in physics & astronomy and minor in theatre arts. She is thrilled to be making her Pitt stages debut! She was previously seen at Pitt in *The Lightning Thief* with MTC (Farmer). Some other past shows include *And Then There Were None* (William Blore) and *The Prom* (Dee Dee Allen). She is so excited to be a part of this amazing show and gives many thanks to the cast and crew!

Ava Rae Hartman (April) is a junior industrial engineering major, and she is thrilled to return to Pitt Stages this semester! Her previous Pitt Stages credits include "Trifles" (Mrs. Hale) and *John Proctor is the Villain* (Ivy). She is grateful for this incredible cast and crew and would like to thank them for their support throughout this process. She hopes everyone enjoys the show!



Lola Hodgins (Kandace) is thrilled to return to Pitt Stages! She is a senior studying urban studies, as well as urban planning & geographical analysis. Previously, she has worked on *The Inseparables* (Dakota), *Jekyll & Hyde* (Emma), *Urinetown* (Little Sally), and *The 25th Annual Putnam County Spelling Bee* (Logianne). She hopes you enjoy the show!

Maeve McNichol (Understudy for April/Nadia) is a freshmen psychology & theatre arts double major here at Pitt. This is her debut show with Pitt Stages! Her favorite roles include Sally Jackson (*The Lightning Thief*), Catherine (*Pippin*), Paulette (*Legally Blonde*), and Belle (*Beauty & the Beast*). She would love to acknowledge the wonderful cast and crew that quickly became the best of friends, and their work to pull off such an amazing show!

Emi Prudhoe (Nadia) is a junior, majoring in ecology and evolution and minoring in theatre arts. Last semester, Emi participated in her first show at Pitt where she played Helena in Shakespeare's, *A Midsummer Night's Dream*. This amazing experience motivated her to audition for her first Pitt Stages show – *Morning Reckoning*! She would like to thank this incredible cast and crew for their unwavering support throughout this entire process. Thank you for coming out and enjoy the show!



Advika Ravishankar (Sue) is so excited to be a part of *Morning Reckoning*! She is a senior computational biology major and theatre arts minor at Pitt. Previous Pitt Stages credits include *Emilia* (Emilia 1), *John Proctor is the Villain* (Student, U/S Raelynn & Nell), and “That’s Not How I Remember It” (Thug 1/Yann 2/ DJ/Waiter). She also recently assistant directed the Musical Theatre Club’s production of *The Lightning Thief*. She is so thankful for this production and everyone who worked on it!

Magdalene Wilson (Trisha/Emily Understudy) is thrilled to be in their first Pitt Stages production. They are a freshman double major in theatre arts and political science, and recently they have worked on *A Midsummer Night’s Dream* (Robin Goodfellow). They are grateful to work with this amazing cast and crew, and they hope you enjoy the show!

Spade You (Trisha) is so excited that she gets to work with Pitt Stages again. She is a senior theatre major and philosophy minor. She used to take part in *The Inseparables* (Ezra), *Jekyll and Hyde* (John Utterson) and *Very Berry Dead* (McGill). She has also previously done crew work in *Corsicana* (run crew), *Abduction* (dresser) and *Julius Casaer* (stage manager and fight captain). She hopes everybody enjoys the show and has fun watching it!



Director's Biography

Ashley Martin (she/her) – Ashley is an arts officer, director, educator, and manager, and she is thrilled to work with Pitt Stages Team on *Morning Reckoning*. Previous directing: *The Astronots*, *Light Years*, *Vinegar Tom*, *Wonder of the World*, *In Common*; Mosser casting associate on *Pale Blue Eye*, *Cha Cha Real Smooth*. Stage management: Pittsburgh Public Theatre, City Theatre, Mountain Playhouse, Bakerloo Theatre Project, International Culture Lab, Pittsburgh Cultural Trust, Three Rivers Entertainment. Teaching: University of Pittsburgh, University of South Carolina, Point Park University.





Production Team Biographies

Colin Eccher (Production Stage Manager) is thrilled to be leading the SM Team on Pitt Stages' *Morning Reckoning!* Colin is a sophomore studying marketing, theatre arts, and nonprofit management. Previous Pitt Stages credits include *The Inseparables* (Assistant Lighting Designer) and "That's Not How I Remember It" (ASM). MTC at Pitt credits include *The Lightning Thief* (PSM) and the 24-hour "Annie Jr." and "High School Musical Jr." (PSM).

Emma Hannan (Assistant Director) is thrilled to be serving as an assistant director for *Morning Reckoning*. Some of her favorite previous roles include student directing for *Mamma Mia* and *The Drowsy Chaperone*. She would like to thank the directing team with Howard Patterson and Ashley Martin for making the fantastic vision come to life.

Maggie Megosh (Assistant Stage Manager) is excited to be participating in her second production at Pitt! She is a psychology and theatre arts double major with a minor in gender, sexuality, and women studies. Maggie has previously worked on shows such as "Trifles," *Into the Woods*, and *A Midsummer's Night Dream*. She can't wait for you to see *Morning Reckoning* and hopes you enjoy the show as much as she's enjoyed working on it.



Howard Patterson (Assistant Director) is a Pittsburgh-based sound designer, audio engineer, and educator. Howard is the Assistant Teaching Professor of Sound Design at University of Pittsburgh. He has worked on many projects in and around Pittsburgh and is passionate about sonic storytelling. Recent designs have been heard at City Theatre Company, TheatreSquared, Quantum Theatre, University of Pittsburgh and Pittsburgh Playhouse. Howard received his BFA from Point Park University.

Maya Viaropulos (Assistant Stage Manager) is an undecided freshman in the Dietrich School of Arts and Sciences. This is her second production with Pitt and she is hopeful to be a part of more in the coming years. Previously, she has worked on North Allegheny's high school productions as well as Pitt Stage's *Dead Man's Cell Phone* (ASM). She hopes you enjoy the show!

Payne Banister (Dramaturg) is excited to share their passion for the 90s and to serve as the dramaturg for *Morning Reckoning*. They are a PhD student in the theatre and performance studies program. They have previously assistant-directed *Dead Man's Cell Phone* (PittStaged), *Cheating Fate* (PittStages), and *Bull in a China Shop* (Washington University in St. Louis). In addition to theater, Payne's creative research practices and interests include drag performance. They hope you enjoy the show!



Creative Team Biographies

Kyle Buchheister (Sound Designer) is a senior environmental science and theatre arts student planning to become a teacher. He's worked on many shows at Pitt in the areas of sound design (*Corsicana*), music direction (MTC's *The Lightning Thief*), scenic design ("Trifles"), performance (*Cheating Fate*, as Shafiq), and is in his seventh semester doing carpentry in the scene shop! Recently, Kyle has achieved his first professional credit as an assistant sound designer for City Theatre's *The Wickham's: Christmas at Pemberly!*

Anmarie Duggan (Lighting Designer) serves as the Chair of the Theatre Arts Department and teaches in the areas of lighting design & stage management. Ms. Duggan holds an MFA in Lighting Design from The University of Arizona. Before moving to Pittsburgh Ms. Duggan was a New York City based freelance lighting designer and production manager. She has worked off Broadway and extensively in regional theater across the country. To learn more about her design work or to check out the app's she partnered to develop visit <http://www.amddesignonline.com>.

Jeremy Kahn (Acting Coach) has performed nationally in over 40 plays including world premieres, classical texts and musicals. His film/TV work includes *Looking* (HBO), *Unleashed*, *Love is Love is*



Love, *The Etruscan Smile* and *Dirt* in addition to many national and regional commercial spots. In the last several years Jeremy has regularly worked as a motion capture artist on the video game NBA2K. He is a proud member of Actors' Equity Association and SAG-AFTRA.

Alex Manalo (Choreographer) is a Fil-Am theater maker, based in Pittsburgh. PPU Grad. Some recent choreography credits: *Gallery of Heroes*, *Tick Tick Boom* (PCLO), *Abduction: the Musical*, *John Proctor is the Villain*, (Pitt Stages), *Godspell*, *Hello Dolly*, *Les Miserables*, *Me and My Girl* (Central/Oakland Catholic High School), *Evil Dead the Musical* (PMT) and *Morning Reckoning* (New Hazlett CSA). She was elated to return to this script after playing Kandace 2 years ago! Much love to this cast and crew, RPK, and Appa. Mabuhay! @alexmanalo_

Hayley Rizor (Assistant Lighting Designer) is super excited to be assistant lighting designing her first Pitt Stages show with *Morning Reckoning*! In the past, she has designed for her high school productions of *Clue: On Stage* and *The Addams Family*. She is currently studying theatre arts and education, hoping to become a theater teacher in the future. When she's not working, you can find her ordering Taco Bell and playing guitar with her friends.



Claire Stemmer (Costume Designer) is a senior double major for theatre arts and linguistics. *Morning Reckoning* is the first full department show Claire has costume designed, and it's been a wild and colorful ride from start to finish. Claire is looking forward to wardrobe supervising for the next department show, *As You Like It* in the spring. Please enjoy the hard work of all the wonderful people involved in this production!

Brad Stephenson (Music Composer) has been part of the Pittsburgh theater community for over 20 years. He produces and performs in the monthly improv comedy show "Knights of the Arcade." Brad is thrilled to have collaborated with Addi Twigg on the music for *Morning Reckoning* and is incredibly proud of Kelly Trumbull's first full-length production.

Addi Twigg (Music Composer) is a vocalist and songwriter known for her passionate presence and powerhouse belt. She fronts roots-rock collective Cisco Kid and thrives in collaboration with artists across a variety of genres. Addi can be found performing tributes and originals all around Pittsburgh. Visit additwigg.com for music, shows, and more.



Creative biographies continued



Kylie Wilson (Scenic Designer) is a senior history and theatre arts double major. Upon graduating in May, Kylie plans on going to graduate school for secondary education to become a history teacher. Previous show credits include scenic charge artist for Pitt Stage's *The Inseparables*, *Spring Awakening*, and *Abduction*, and will be charging her last show here *As You Like It* later this semester. She hopes everyone enjoys the show!

 [Return to Production List](#)



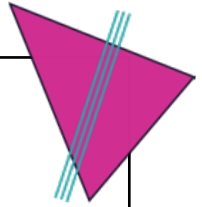
Special Thanks

Props and Dressing Items from:
Carnegie Mellon Props Department
Point Park University Props Department
Eve Bandi
Brittany Graham
Dave and Tracy Martin
Jennifer Murray
Katie Shaffer
Dr. Rachel Krenek, Fangirl Cultural Consultant



Create
Connect
Collaborate

creative.pitt.edu



PITTARTS

Connecting
students to
Pittsburgh's
vibrant arts
scene

pittarts.pitt.edu

Production Crew

Production Director.....	Hadley Armstrong
Technical Director.....	JC Bardzil
Assistant Technical Directors.....	Abbie Wagner, Charlie Lovett-Dietrich, Parker Stephens
Director of Lighting, Sound and Projections.....	Forrest Trimble
Costume Shop Manager.....	Ricky Lyle Campbell
Costume Shop Assistant Manager.....	Brittany Graham
Prop Shop Manager.....	Natalie Rose Mabry
Prop Shop Production Assistant.....	Stefania Di Michele
Prop Associate.....	Rachel Song
Scenic Production Assistants.....	Liza Brown, Kyle Buchheister
Scenic Advisor.....	Britton Mauk
Scenic Charge Artist.....	Julia Ferranti
Assistant Charge Artist.....	Audrey Clare
Faculty Scenic Mentor.....	Alex Dolinger
Scenic Artists.....	Gianni Downs, Kylie Wilson
Painters.....	Sophia Boucher, Ciara Brand, Tchama Louis, Adidit Wadhwa, Civ Williams
Carpenters.....	Sabrina Bunca, Lottie Heerssen, Emma Mihok, Julianna Ohler, Aiden Wilt, the Introduction to Stagecraft Class
Dresser.....	Diana Craycroft
Cutter/Draper.....	Maya Jones
Stitchers.....	Claire Stemmer, Elizabeth Fitzgerald, Sasha Tepp, Anqi Wang, and the Costume Production and Technology class
Light Board Operator.....	Sienna Dixon
Sound Board Operator.....	Emma Reilly
Sound Supervisor.....	Kyra Patenaude
House Electricians.....	Krishna Amin, Kyle Bushheister, Miles Fraser
Assistant Electrician.....	Kaylynn Zhang
Show Electricians.....	Katie Mosca, Aidan O'Hara, Danielle Yakubisin

Support this work

With your help, we are able to showcase our students and faculty while building a future for theatre in our region. A contribution to the Department of Theatre Arts today ensures these programs will continue to enrich our cultural community. Thank you for supporting the arts!

DONATE TODAY

About Pitt Stages

Pitt Stages is the in-house production company for the Department of Theatre Arts at the University of Pittsburgh, an accredited member of the National Association of Schools of Theatre. The department believes in a philosophy of theatre education based on the integration of theory and practice, academic and creative work, and educational and professional theatre.

Faculty

Department Chair..... Annmarie Duggan
Director of Graduate Studies..... Michelle Granshaw
Director of Undergraduate Studies..... Gianni P. Downs
Head of MFA in Performance Pedagogy..... Cynthia Croot
Head of Design, Technology, and Management..... Karen Gilmer
Head of History/Literature/Criticism..... Michelle Granshaw
Head of Performance..... Ricardo Vila-Roger
Faculty..... Eve Bandi, Kathleen George, Qianru Li,
Britton Mauk, Patrick McKelvey, Tom Pacio,
Howard Patterson, Becki Toth, Kelly Trumbull

Chosky Teaching Artist-in-Residence..... Natalie Mabry
Richard E. Rauh Teaching Artist-in-Residence..... Tonya Lynn

Professor Emeriti..... W. Stephen Coleman, Don Mangone and
Bruce McConachie

Administrative Staff

Arts Administrative Officer..... Ashley Martin
Production Director..... Hadley Armstrong
Academic Operation Manager..... Erin Delaney
Department Coordinator..... Micky Krenek
Academic Administrator..... Connie Markiw
Graduate Student Services Administrator..... LJ Woolcock-Srolovic
Marketing and Outreach Manager..... Daniel Fleegle
Patron and Rental Services Manager..... Jeremy Seghers
Marketing and Engagement Specialist..... Nicole Sauter
Business Coordinator..... Amanda Raczkowski

Production Staff

Technical Director..... JC Bardzil
Assistant Technical Director..... Abbie Wagner
Costume Shop Manager..... Ricky Campbell
Costume Shop Assistant Manager..... Brittany Graham
Director of Lighting, Sound and Projections..... Forrest Trimble

Save the date for the final production!

2024-25 Season
PITT STAGES proudly presents

University of Pittsburgh

As You Like It

A Musical Adaptation of
William Shakespeare's *As You Like It*
Written and Adapted by
Shaina Taub and Laurie Woolery
Director: **Tom Pacio**
Music Director: **Becki Toth**
Music and Lyrics by **Shaina Taub**

Friday, 4.4.25
through
Sunday, 4.13.25



Charity Randall Theatre
4301 Forbes Ave.,
Pittsburgh, PA 15213

For more information
and tickets,
visit play.pitt.edu



Forced from their homes, Orlando, Duke Senior, his daughter Rosalind and niece Celia escape to the Forest of Arden, a fantastical place of transformation, where all are welcomed and embraced. Lost amidst the trees, the refugees find community and acceptance under the stars. A musical adaptation of William Shakespeare's *As You Like It*



University of
Pittsburgh

Theatre Arts
Dietrich School of Arts and Sciences

play.pitt.edu

20/20